

SIZE KEY

xx-large	- - - - -
x-large	- - - - -
large	- - - - -
medium	- - - - -
small	- - - - -
x-small	- - - - -

Notes:

- All garment patterns are size XS - XXL
- Use tracing paper, pattern paper, or tissue to trace your size
- Transfer all markings such as notches and darts
- Some larger pattern pieces need to be pieced together - trace and match up each sheet on sheet border line, and align matching alpha numeric notches

Billie Top / Tunic
A1
Front
 Cut 1 on fold from fabric

Billie Top / Tunic
A2
Back
 Cut 1 on fold from fabric

Billie Top / Tunic
A4
Front Facing
 Cut 1 from fabric
 Cut 1 from interfacing

Pym Pant
F1
Front
 Cut 2 from fabric

Billie Top / Tunic
A3
Sleeve
 Cut 2 from fabric

Billie Top / Tunic
A5
Back Facing
 Cut 1 from fabric
 Cut 1 from interfacing

grainline

grainline

grainline

grainline

grainline

grainline

TOP LENGTH

TOP LENGTH

ON FOLD

ON FOLD

3/4 SLV

SLEEVELESS

3/4 SLV

SLEEVELESS

F2

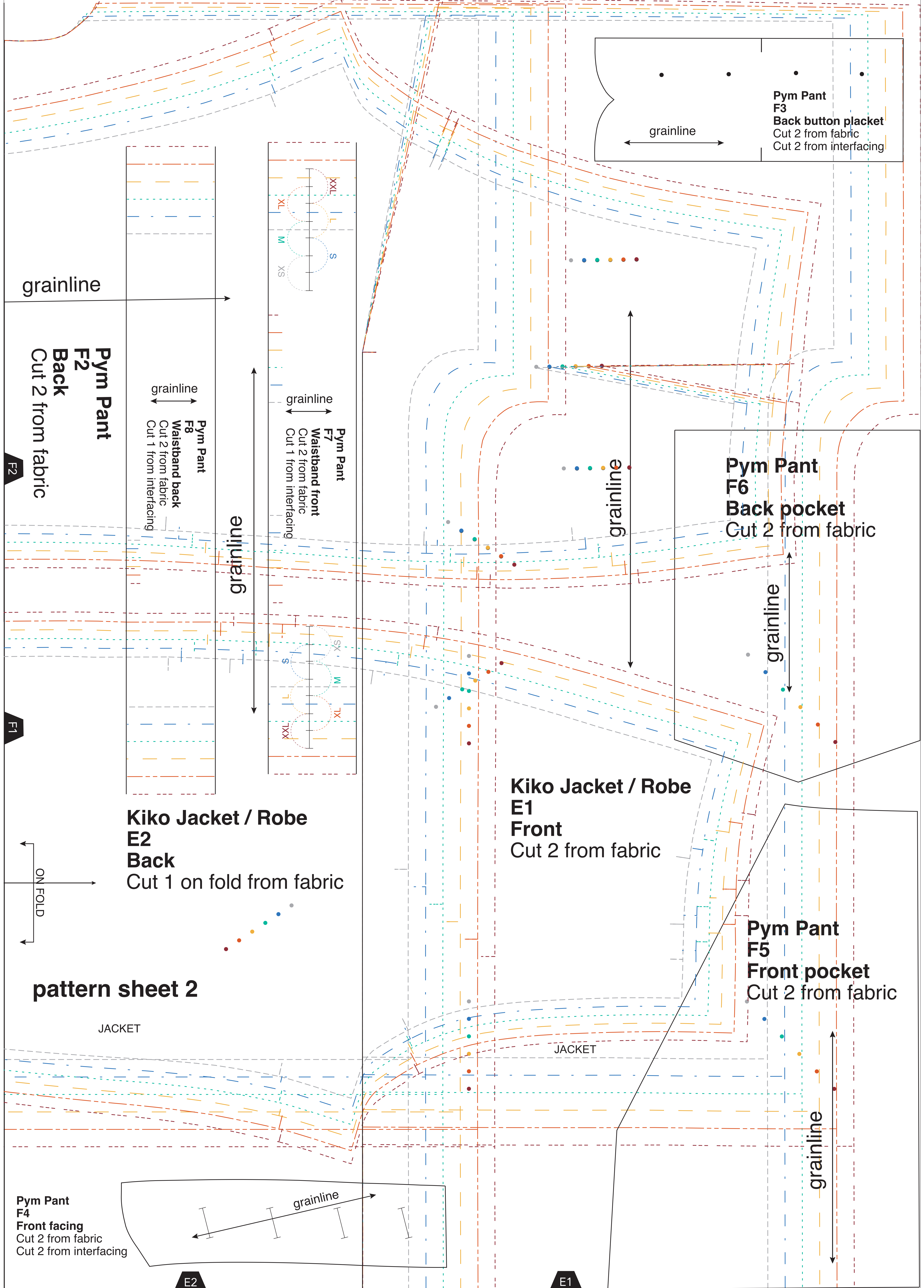
F1

TUNIC

A1

TUNIC

A2



**Pym Pant
F3
Back button placket**
Cut 2 from fabric
Cut 2 from interfacing

grainline

**Pym Pant
F2
Back**
Cut 2 from fabric

**Pym Pant
F8
Waistband back**
Cut 2 from fabric
Cut 1 from interfacing

**Pym Pant
F7
Waistband front**
Cut 2 from fabric
Cut 1 from interfacing

**Pym Pant
F6
Back pocket**
Cut 2 from fabric

**Kiko Jacket / Robe
E1
Front**
Cut 2 from fabric

**Kiko Jacket / Robe
E2
Back**
Cut 1 on fold from fabric

**Pym Pant
F5
Front pocket**
Cut 2 from fabric

pattern sheet 2

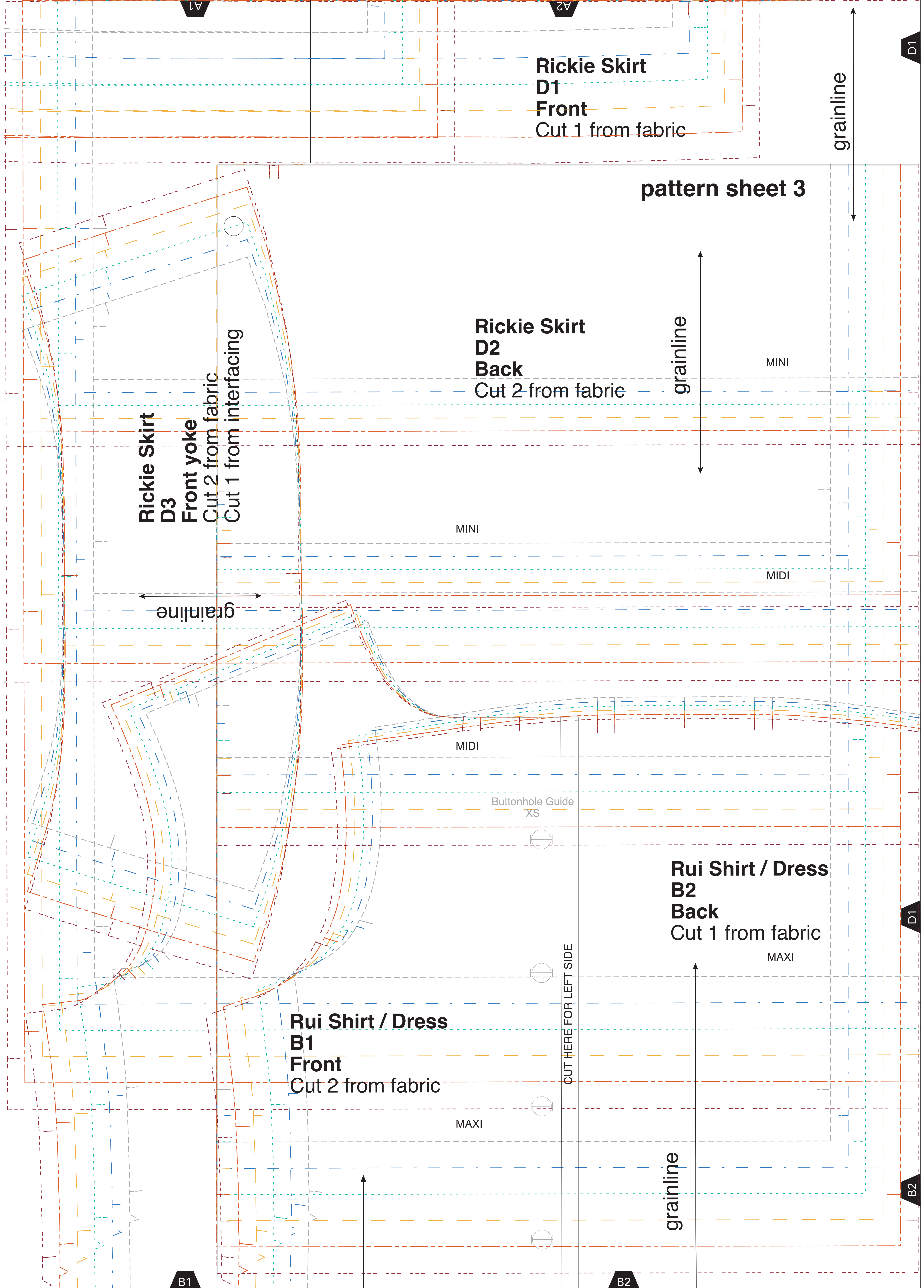
JACKET

JACKET

**Pym Pant
F4
Front facing**
Cut 2 from fabric
Cut 2 from interfacing

E2

E1



Rickie Skirt
D1
Front
Cut 1 from fabric

pattern sheet 3

Rickie Skirt
D2
Back
Cut 2 from fabric

Rickie Skirt
D3
Front yoke
Cut 2 from fabric
Cut 1 from interfacing

grainline

grainline

MINI

MINI

MIDI

grainline

MIDI

Buttonhole Guide
XS

Rui Shirt / Dress
B2
Back
Cut 1 from fabric

MAXI

Rui Shirt / Dress
B1
Front
Cut 2 from fabric

MAXI

grainline

CUT HERE FOR LEFT SIDE

B1

B2

D1

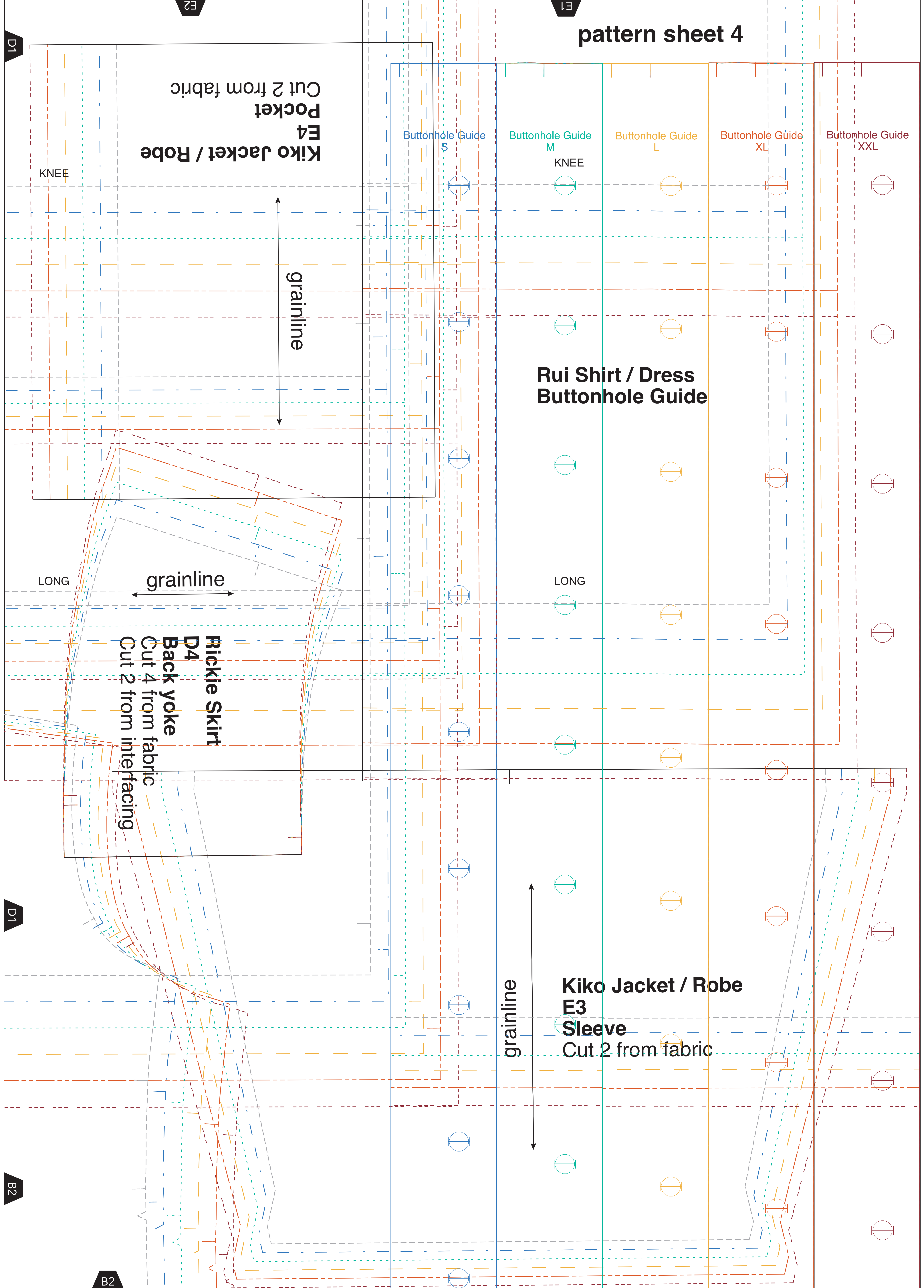
D1

D2

A1

A2

pattern sheet 4



Kiko Jacket / Robe
E4
Pocket
Cut 2 from fabric

KNEE

grainline

LONG

grainline

Rickie Skirt
D4
Back yoke
Cut 4 from fabric
Cut 2 from interfacing

Rui Shirt / Dress
Buttonhole Guide

Buttonhole Guide
S

Buttonhole Guide
M
KNEE

Buttonhole Guide
L

Buttonhole Guide
XL

Buttonhole Guide
XXL

LONG

Kiko Jacket / Robe
E3
Sleeve
Cut 2 from fabric

grainline

D1

D1

B2

B2

E2

E1

grainline

Universal Pocket
X1
Cut 4 from fabric

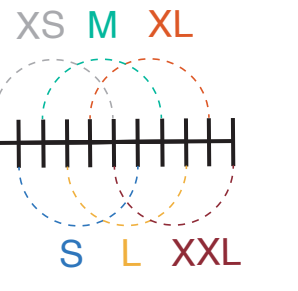
grainline

SHORT

grainline

SHORT

Rui Shirt / Dress
B8
Sleeve cuff
Cut 4 from fabric
Cut 2 from interfacing



Rui Shirt / Dress
B6
Sleeve
Cut 2 from fabric

grainline

Rui Shirt / Dress
B4
Collar Stand
Cut 2 from fabric
Cut 1 from interfacing

grainline

grainline

Rui Shirt / Dress
B5
Collar
Cut 2 from fabric
Cut 1 from interfacing

KNEE

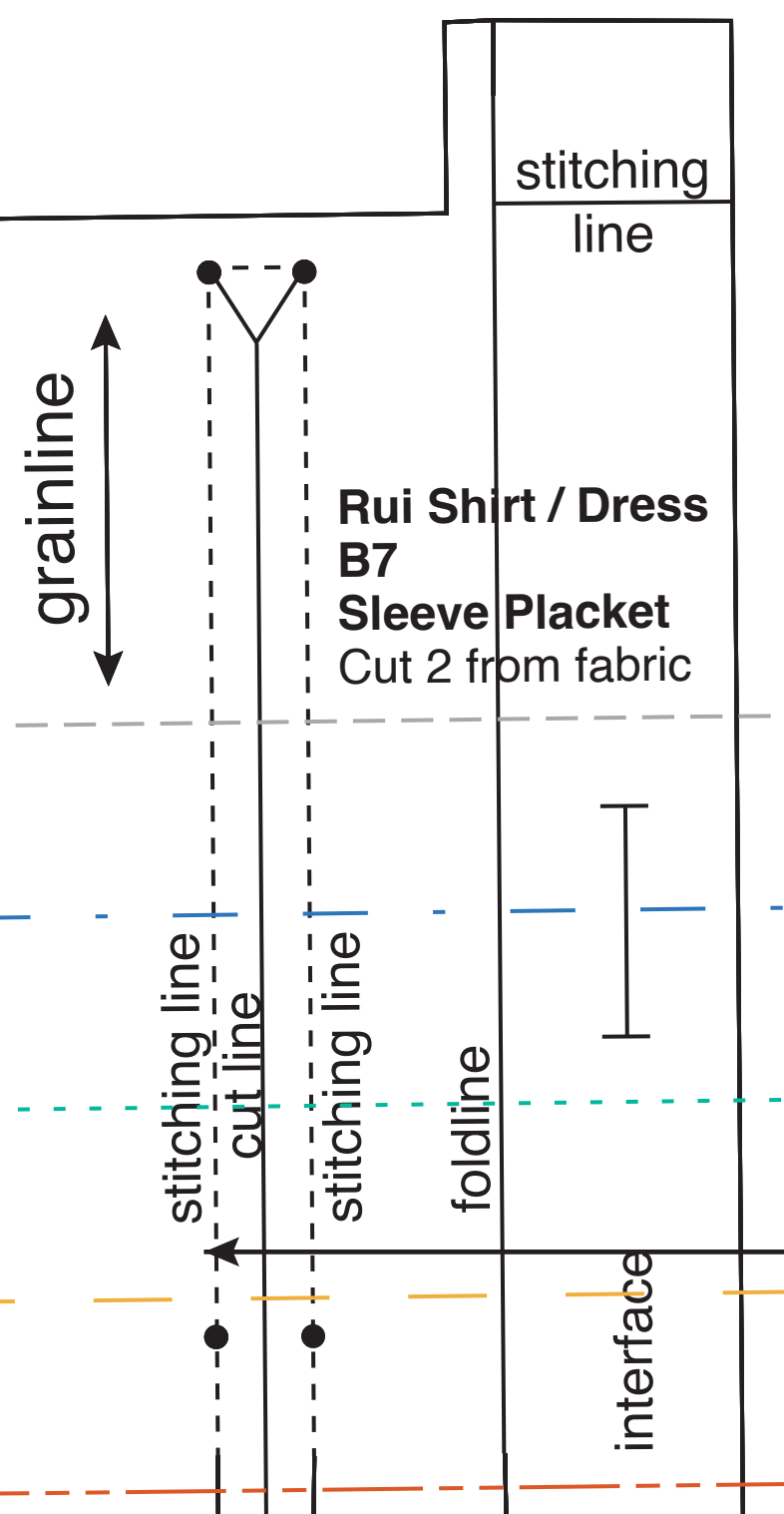
KNEE

Rui Shirt / Dress
B3
Back Yoke
Cut 2 from fabric

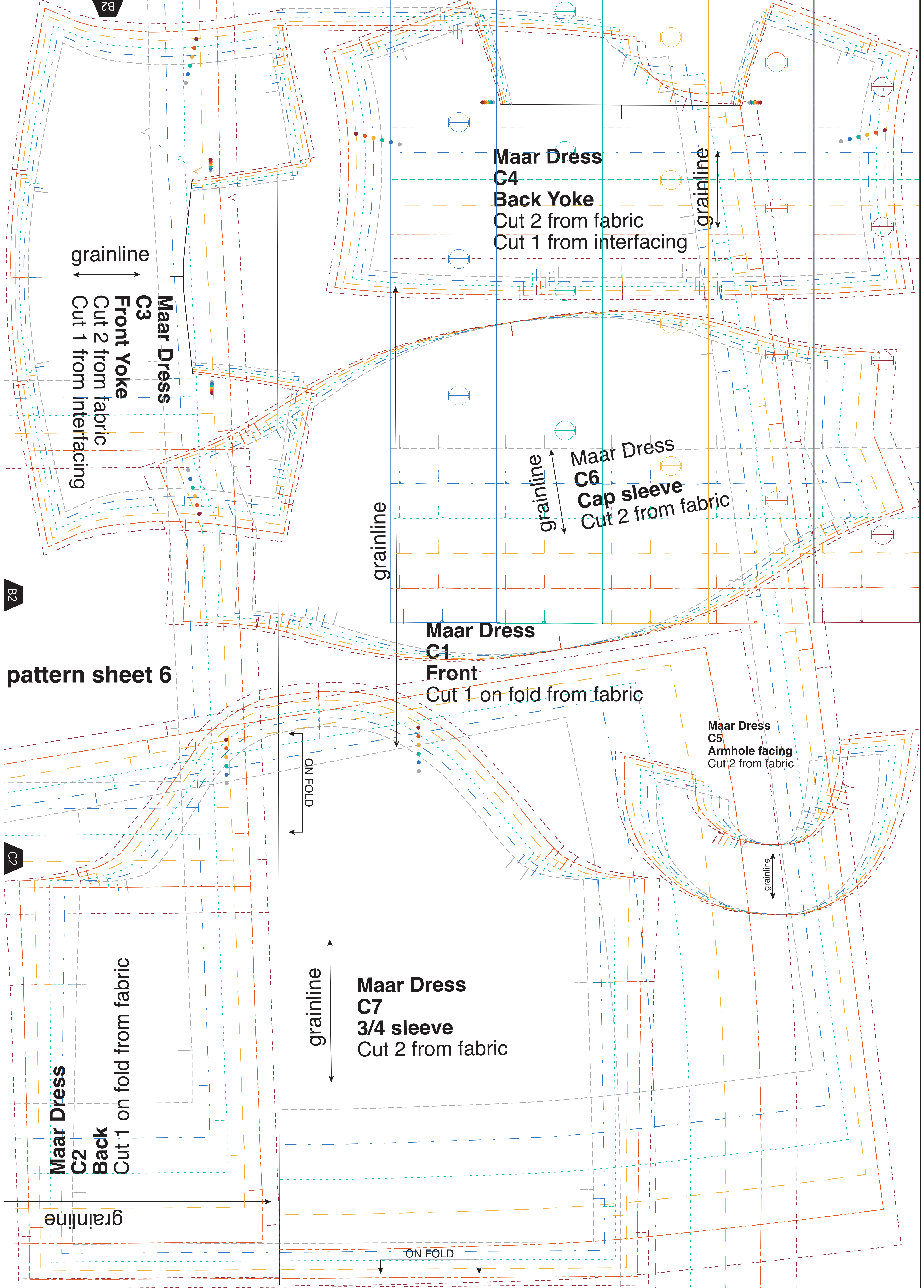
grainline

LONG

LONG



Rui Shirt / Dress
B7
Sleeve Placket
Cut 2 from fabric



pattern sheet 6

B2

B2

C2

grainline
Maar Dress
C3
Front Yoke
Cut 2 from fabric
Cut 1 from interfacing

grainline
Maar Dress
C4
Back Yoke
Cut 2 from fabric
Cut 1 from interfacing

grainline
Maar Dress
C6
Cap sleeve
Cut 2 from fabric

grainline
Maar Dress
C1
Front
Cut 1 on fold from fabric

grainline
Maar Dress
C5
Armhole facing
Cut 2 from fabric

grainline
Maar Dress
C2
Back
Cut 1 on fold from fabric

grainline
Maar Dress
C7
3/4 sleeve
Cut 2 from fabric

ON FOLD

ON FOLD

grainline

grainline

grainline

grainline

grainline

grainline