



Luma

Designed by Véronik Avery

It might feel indulgent to knit with more than a single skein of this ultra-soft Merino at a time, but the best materials surely call for a magnum opus of a knitting project. When designer Véronik Avery asked to make not only a sweater, but a *sweater coat*, with this unique wool, how could I refuse? Being swathed in a cloud-like, lofty layer of Woolfolk Får in a cool white is the ultimate in luxury, and something that I wish each knitter could experience at least once.

Gentle patterned stitches throughout the body allow knitters to focus on the natural beauty of the wool, while reversible cables on the collar add an element of elegant surprise. While the yarn is anything but everyday, this is a garment to live in. Given that each shearing of Ultimate Merino® is limited and dye lots sell out quickly, this textured coat is the knit of a lifetime.

SIZES

X-Small (Small, Medium, Large, X-Large, 2X-Large, 3X-Large)

FINISHED MEASUREMENTS

43 (47, 51, 54½, 58½, 62½, 66)" [109 (119.5, 129.5, 138.5, 148.5, 159, 167.5) cm] bust, with fronts overlapped

YARN

Woolfolk Får [100% Merino wool; 142 yards (130 meters) / 1¾ ounces (50 grams)]: 16 (18, 20, 22, 24, 27, 29) hanks #01 Off White

NEEDLES

Size US 4 (3.5 mm) circular needle 32" (80 cm) long for Tubular CO (optional)

Size US 6 (4 mm) straight needles

Size US 8 (5 mm) straight needles

Spare size US 8 (5 mm) needle, for 3-Needle BO

Change needle size if necessary to obtain correct gauge.

NOTIONS

Cable needle; stitch markers; stitch holders; waste yarn for Tubular CO (optional)

GAUGE

18¾ sts and 32 rows = 4" (10 cm) in Texture Pattern, using larger needles

ABBREVIATIONS

[Inc + k2tog]: With the tip of the left-hand needle inserted from front to back, lift the strand between the 2 needles onto the left-hand needle, then knit it together with next st on left-hand needle.

Dec3R: Slip 3 sts to cn and hold parallel to and behind left-hand needle; *insert right-hand needle into first st on left-hand needle, then into first st on cn; knit these 2 sts together; repeat from * once; insert right-hand needle into first st on cn, then into first st on left-hand needle purlwise; purl these 2 sts together—3 sts decreased.

Dec3L: Slip 3 sts to cn and hold parallel to and in front of left-hand needle; insert right-hand needle into first st on left-hand needle, then into first st on cn purlwise; purl these 2 sts together;

*insert right-hand needle into first st on cn, then into first st on left-hand needle; knit these 2 sts together; repeat from * once—3 sts decreased. together] twice; transfer rem st on cn to left-hand needle, p2tog

SPECIAL TECHNIQUE

3-NEEDLE BO: Place the sts to be joined onto two same-size needles; hold the pieces to be joined with the wrong sides facing each other and the needles parallel, both pointing to the right. Holding both needles in your left hand, and using working yarn and a third needle same size or one size larger, insert third needle into first st on front needle, then into first st on back needle; knit these two sts together; *knit next st from each needle together (2 sts on right-hand needle); pass first st over second st to BO 1 st. Repeat from * until 1 st remains on third needle; cut yarn and fasten off.

LEFT FRONT

Note: If you don't wish to work a Tubular CO, use smaller needles, working yarn, and your preferred method to CO 58 (62, 66, 70, 74, 82, 86) sts, then proceed to Ribbing Set-Up Row 1.

Tubular CO

Using smaller needles, waste yarn, and your preferred method, CO 30 (32, 34, 36, 38, 42, 44) sts. Change to working yarn.

Row 1 (RS): K1, [inc + k2tog], *insert right-hand needle from back to front under strand between needles and purl strand, k1; repeat from * to end—58 (62, 66, 70, 74, 82, 86) sts.

Row 2: P1, k1, *slip 1 wyib, k1; repeat from * to last st, slip 1 wyib. 2 sts, slip 1 wyif, p1. end.

Row 3: K1, *slip 1 wyib, k1; repeat from * to last st, k1.

Row 4: Repeat Row 2.

With RS facing, rearrange sts as follows (without knitting sts): Slip 1, *slip 2 sts (1 knit st, 1 purl st) to right-hand needle, slip 1 knit st to cn and hold to front, slip 1 purl st to right-hand needle, slip 1 st from cn to right-hand needle; repeat from * to last 13 sts, slip 13 sts in their current order to right-hand needle. Slide sts back to opposite end of needle, ready to work a RS row.

Ribbing Set-Up Row 1 (RS): *K2, p2; repeat from * to last 14 sts, knit to end.

Ribbing Set-Up Row 2: Slip 1 wyif, k11, *p2, k2; repeat from * to last 14 sts, p2, knit to end. 2 sts, p2.

Rows 3–6: Repeat Ribbing Set-Up Rows 1 and 2 twice.

Row 7: *K2, p2; repeat from * to last 38 sts, pm, work Chart A across next 26 sts, pm, knit to end.

Work even for 16 rows.

Change to larger needles.

Texture Set-Up Row 1 (WS): Slip 1 wyif, knit to marker, sm, work to next marker, sm, M1L 0 (0, 1, 0, 0, 0, 0) time(s), knit to last st, M1L 1 (0, 1, 1, 0, 1, 0) time(s), p1—59 (62, 68, 71, 74, 83, 86) sts.

Texture Set-Up Row 2: K1, work Texture Pattern to marker, sm, work to end.

Work even until piece measures approximately 11 (11¼, 11½, 12, 12¼, 12½, 12¾)" [28 (28.5, 29, 30.5, 31, 32, 32.5) cm] from the beginning, ending with Row 2 of Texture Pattern.

Shape Side and Change to Charts B and C

Note: Side shaping will be worked at the same time as changing to Charts B and C; please read entire section through before beginning.

Row 1 (RS): Work to 1 st before marker, [k1, yo, k1] in next st, sm, work to end—2 sts increased.

Row 2: Work even, working increased sts into Texture Pattern.

Row 3: Work to 2 sts before marker, k1-f/b, p1, sm, work to end—1 st increased.

Rows 4–48: Repeat Row 2.

Repeat Rows 1–48 once, then Rows 1–4 once.

AT THE SAME TIME, when piece measures approximately 20¼ (20¼, 20¼, 21¼, 21¼, 21¼, 21¼)" [51.5 (51.5, 51.5, 54, 54, 54, 54) cm] from the beginning, ending with Row 2 of Chart A, change to Chart B between markers; work Rows 1–10 of Chart B once, then Rows 3–8 three times. Change to Chart C between markers; work Rows 1 and 2 of Chart C once—74 (77, 83, 86, 89, 98, 101) sts. Piece should measure approximately 25 (25, 25, 26, 26, 26, 26)" [63.5 (63.5, 63.5, 66, 66, 66, 66) cm]. Make note of last row of Texture Pattern worked.

CHART A

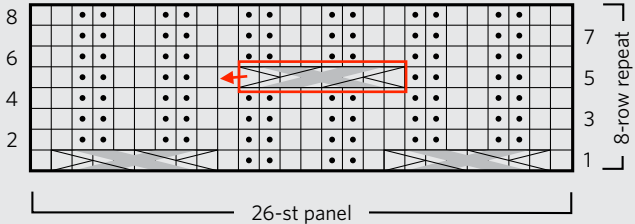


CHART B

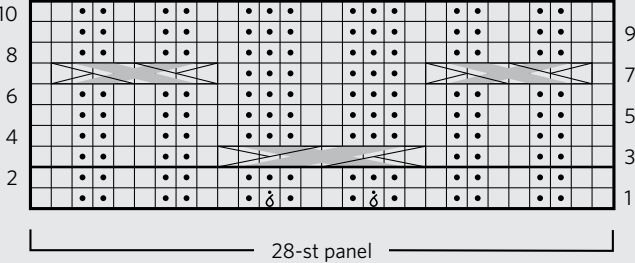


CHART C

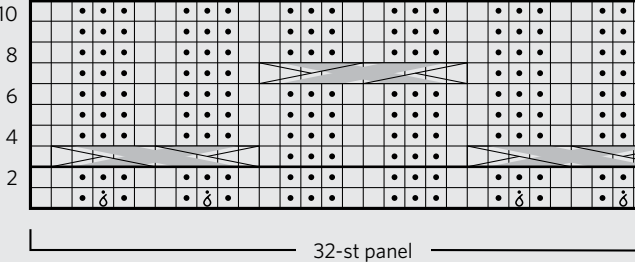


CHART D

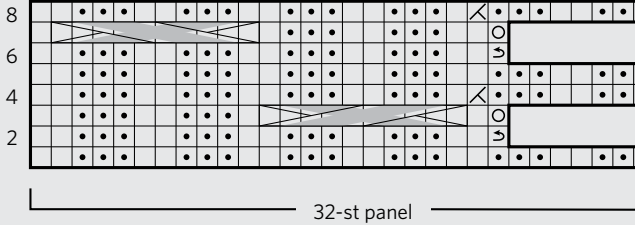
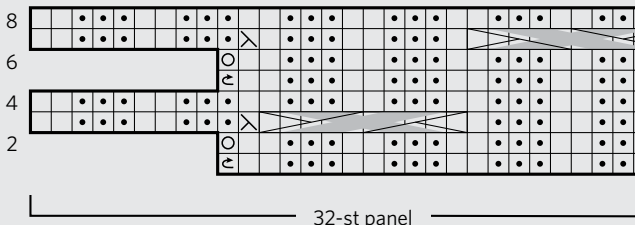
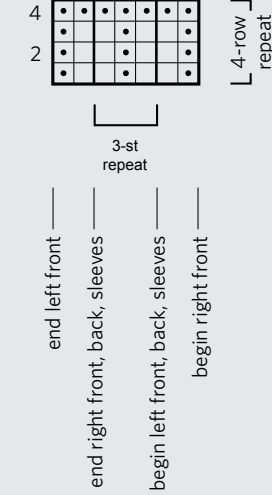


CHART E



- Knit on RS, purl on WS.
- Purl on RS, knit on WS.
- M1PR
- Turn work.
- Yo
- P2tog on WS.
- Ssk
- Slip 4 sts to cn, hold to back, k1, p2, k1, [k1, p2, k1] from cn.
- Slip 4 sts to cn, hold to front, k1, p2, k1, [k1, p2, k1] from cn.
- Slip 5 sts to cn, hold to back, k1, p3, k1, [k1, p3, k1] from cn.
- Slip 5 sts to cn, hold to front, k1, p3, k1, [k1, p3, k1] from cn.

TEXTURE PATTERN





Shape Raglan Armhole

Working Rows 3–10 of Chart C throughout remainder of raglan, BO 3 (3, 6, 9, 9, 12, 12) sts at armhole edge once, then decrease 3 sts on next RS row, then every 4 rows 4 (5, 5, 4, 4, 8, 8) times, then every 8 rows 2 (2, 3, 4, 5, 3, 4) times as follows: Work 3 sts, dec3L, work to end—50 sts remain.

Next Row (WS): Work to 1 st before last marker, pm, work 1 st, remove marker, work to end.

Decrease 1 st on next RS row, then every other row 4 times, as follows: Work to 2 sts before marker, k2tog, work to end—45 sts remain.

^(1 edge st at armhole edge, 32 sts in cable pattern, and 12 center front sts)

Work even until armhole measures approximately 7¼ (8¼, 9¼, 9¼, 10¼, 10¼, 11¼)" [18.5 (21, 23.5, 23.5, 26, 26, 28.5) cm], ending with Row 4 of Chart C.

Shape Collar

Set-Up Row (RS): K1, sm, work Chart D to marker, work to end.

Work even until you have completed Rows 1–8 of Chart D seven times, then work even for 0 (2, 2, 4, 4, 4, 6) more rows. Transfer sts to holder. 0 (2, 2, 4, 4, 4, 6) rows of Chart C, beginning with Row 5.

RIGHT FRONT

Note: If you don't wish to work a Tubular CO, use smaller needles, working yarn, and your preferred method to CO 58 (62, 66, 70, 74, 82, 86) sts, then proceed to Ribbing Set-Up Row 1.

Tubular CO

Work as for Left Front through Row 4 of Tubular CO—58 (62, 66, 70, 74, 82, 86) sts after Row 2. 1

With RS facing, rearrange sts as follows (without knitting sts): Slip 13 sts in their current order to right-hand needle, *slip 2 sts (1 knit st, 1 purl st) to right-hand needle, slip 1 knit st to cn and hold to front, slip 1 purl st to right-hand needle, slip 1 st from cn to right-hand needle; repeat from * to last st, slip 1 st to right-hand needle. Slide sts back to opposite end of needle, ready to work a RS row.

Ribbing Set-Up Row 1 (RS): Slip 1 wyif, k13, *p2, k2; repeat from * to end.

Ribbing Set-Up Row 2: P2, *k2, p2; repeat from * to last 12 sts, knit to end.

Rows 3–6: Repeat Ribbing Set-Up Rows 1 and 2 twice.

Row 7: Slip 1 wyif, k11, pm, work Chart A across next 26 sts, pm, work to end.

Work even for 16 rows.

Change to larger needles.

Texture Set-Up Row 1 (WS): P1, MIL 1 (0, 1, 1, 0, 1, 0) time(s), knit to marker, MIL 0 (0, 1, 0, 0, 0, 0) time(s), sm, work to next marker, sm, knit to end—59 (62, 68, 71, 74, 83, 86) sts.

Texture Set-Up Row 2: Slip 1 wyif, k11, sm, work to next marker, sm, work Texture Pattern to last st, k1.

Work even until piece measures approximately 11 (11¼, 11½, 12, 12¼, 12½, 12¾)" [28 (28.5, 29, 30.5, 31, 32, 32.5) cm] from the beginning, ending with Row 2 of Texture Pattern.

Shape Side and Change to Charts B and C

Note: Side shaping will be worked at the same time as changing to Charts B and C; please read entire section through before beginning.

Row 1 (RS): Work to second marker, sm, [k1, yo, k1] in next st, work to end—2 sts increased.

Row 2: Work even, working increased sts into Texture Pattern.

Row 3: Work to second marker, sm, p1, k1-f/b, work to end—1 st increased.

Rows 4–48: Repeat Row 2.

Repeat Rows 1–48 once, then Rows 1–4 once.

AT THE SAME TIME, when piece measures approximately 20¼ (20¼, 20¼, 21¼, 21¼, 21¼, 21¼)" [51.5 (51.5, 51.5, 54, 54, 54, 54) cm] from the beginning, ending with Row 2 of Chart A, change to Chart B between markers; work Rows 1–10 of Chart B once, then Rows 3–8 three times. Change to Chart C between markers; work Rows 1–3 of Chart C once—74 (77, 83, 86, 89, 98, 101) sts. Piece should measure approximately 25 (25, 25, 26, 26, 26, 26)" [63.5 (63.5, 63.5, 66, 66, 66, 66) cm].

Shape Raglan Armhole

Working Rows 4–10 of Chart C once, then Rows 3–8 of chart throughout remainder of raglan, BO 3 (3, 6,

9, 9, 12, 12) sts at armhole edge once, then decrease 3 sts on next RS row, then every 4 rows 4 (5, 5, 4, 4, 8, 8) times, then every 8 rows 2 (2, 3, 4, 5, 3, 4) times as follows: Work to last 9 sts, dec3R, work to end—50 sts remain.

Next Row (WS): Work 6 sts, remove marker, work 1 st, pm, work to end.

Decrease 1 st on next RS this row, then every other row 4 times, as follows: Work to marker, ssk, work to end—45 sts remain.

Work even until armhole measures approximately 7¼ (8¼, 9¼, 9¼, 10¼, 10¼, 11¼)" [18.5 (21, 23.5, 23.5, 26, 26, 28.5) cm], ending with Row 4 of Chart C.

Shape Collar

Set-Up Row (RS): Work to marker, sm, work Chart E to last st, pm, marker, sm, k1.

Work even until you have completed Rows 1–8 of Chart E seven times. times, then work 0 (2, 2, 4, 4, 4, 6) rows of Chart C, beginning with Row 5.

~~Set-Up Row (RS): Work to marker, sm, work Chart C (beginning with Row 5) to marker, sm, k1.~~

~~Work even for 3 (1, 1, 5, 3, 7, 7) row(s). Transfer sts to holder; do not cut yarn.~~

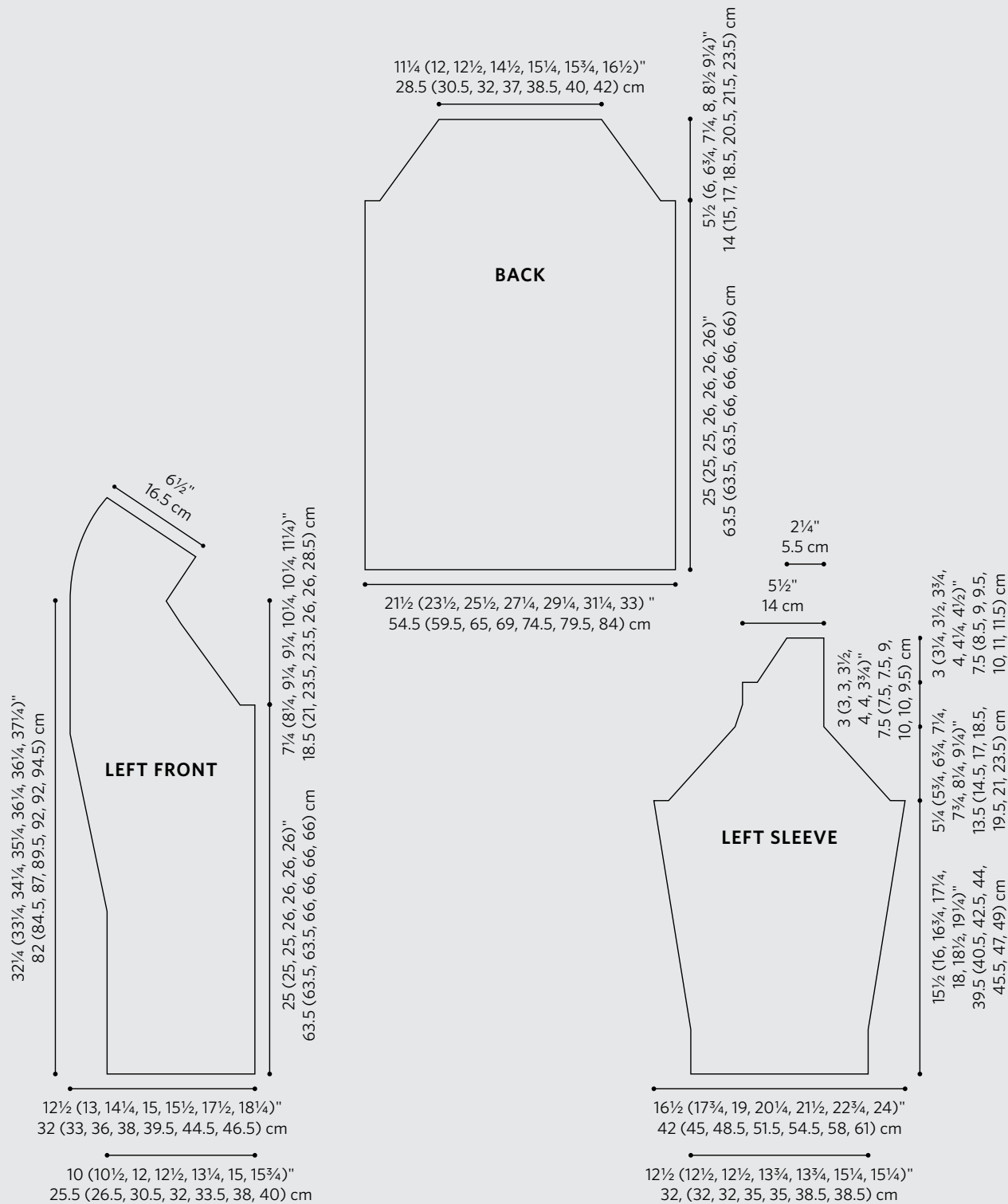
BACK

Note: If you don't wish to work a Tubular CO, use smaller needles, working yarn, and your preferred method to CO 98 (110, 118, 126, 134, 146, 154) sts, then proceed to Ribbing Set-Up Row 1.

Tubular CO

Using smaller needles, waste yarn, and your preferred method, CO 50 (56, 60, 64, 68, 74, 78) sts. Change to working yarn.

Work Rows 1–4 of Tubular CO as for Left Front—98 (110, 118, 126, 134, 146, 154) sts after Row 2. 1



With RS facing, rearrange sts as follows (without knitting sts): Slip 1 st, *slip 2 sts (1 knit st, 1 purl st) to right-hand needle, slip 1 knit st to cn and hold to front, slip 1 purl st to right-hand needle, slip 1 st from cn to right-hand needle; repeat from * to last st, slip 1 to right-hand needle. Slide sts back to opposite end of needle, ready to work a RS row.

Ribbing Set-Up Row 1 (RS): *K2, p2; repeat from * to last 14 sts, knit to end. 2 sts, k2.

Ribbing Set-Up Row 2: Slip 1 wyif, k1l, *p2, k2, repeat from * to last 14 sts, p2, knit to end. P2, *k2, p2; repeat from * to end.

Rows 3–6: Repeat Ribbing Set-Up Rows 1 and 2 twice.

Row 7: *K2, p2, repeat from * to last 38 sts, pm, work Chart A across next 26 sts, pm, knit to end.

Work even for 16 rows. 21
Change to larger needles.

Texture Set-Up Row 1 (WS): P1, knit to last st, increasing 3 (0, 1, 2, 3, 0, 1) st(s) evenly across, p1–101 (110, 119, 128, 137, 146, 155) sts.

Texture Set-Up Row 2: K1, work Texture Pattern to last st, k1.

Work even until piece measures same as for Left Front to armhole shaping, ending with same row of Texture Pattern as for Left Front.

Shape Raglan Armholes

BO 3 (3, 6, 9, 9, 12, 12) sts at beginning of next 2 rows—95 (104, 107, 110, 119, 122, 131) sts remain.
Decrease 3 sts each side this row, then every 4 rows 3 (4, 2, 0, 0, 0, 0) times, then every 8 rows 3 (3, 5, 5, 7, 6, 7) times, then every 12 rows 0 (0, 0, 1, 0, 1, 1) time(s), as follows: Work 3 sts, dec3L, work to last 9 sts, dec3R, work to end—53 (56, 59, 68, 71, 74, 77) sts remain.

Work even until armholes measure 5 1/2 (6, 6 3/4, 7 1/4, 8, 8 1/2, 9 1/4)" [14 (15, 17, 18.5, 20.5, 21.5, 23.5) cm].
BO all sts.

LEFT SLEEVE

Note: If you don't wish to work a Tubular CO, use smaller needles, working yarn, and your preferred method to CO 58 (58, 58, 62, 62, 70, 70) sts, then work as for Back to end of ribbing.

Tubular CO

Using smaller needles, waste yarn, and your preferred method, CO 30 (30, 30, 32, 32, 36, 36) sts. Change to working yarn.
Work as for Back to end of ribbing—58 (58, 58, 62, 62, 70, 70) sts after Row 2.

Texture Set-Up Row 1 (WS): P1, knit to last st, increasing 1 (1, 1, 3, 3, 1, 1) st(s) evenly across, p1–59 (59, 59, 65, 65, 71, 71) sts.

Texture Set-Up Row 2: K1, work Texture Pattern to last st, k1.

Work even until piece measures 4" (10 cm) from the beginning, ending with a WS row.

Shape Sleeve

Increase 1 st each side on this row, then every 12 (8, 8, 8, 8, 6) rows 1 (11, 5, 7, 1, 3, 18) time(s), then every 10 (0, 6, 6, 6, 6, 4) rows 7 (0, 9, 7, 16, 14, 2) times, as follows: K1, M1R, work to last st, M1L, k1–77 (83, 89, 95, 101, 107, 113) sts.
Work even until piece measures 15 1/2 (16, 16 3/4, 17 1/4, 18, 18 1/2, 19 1/4) [39.5 (40.5, 42.5, 44, 45.5, 47, 49) cm] from the beginning, ending with a WS row.

Shape Raglan Cap

BO 3 (3, 6, 9, 9, 12, 12) sts at beginning of next 2 rows, then decrease 3 sts each side on next RS row, then every 4 rows 2 (3, 1, 0, 1, 0, 0) time(s), then every 8 rows 4 (4, 6, 7, 7, 8, 9) times, as follows: Work 3 sts, dec3L, work to last 9 sts, dec3R, work to end—29 sts remain.

Work even for 9 rows.

Shape Front Edge

Next Row (RS): Work to last 9 sts, dec3R, work to end—26 sts remain.

Work even until cap measures approximately 8¼ (8¾, 9¾, 10¾, 11¾, 12¼, 13)" [21 (22, 25, 27.5, 30, 31, 33) cm], ending with Row 1 of Texture Pattern.

Shape Neck Edge

Next Row (WS): BO 6 sts, work to end—20 sts remain. Decrease 3 sts at neck edge on next RS row, then every 4 rows twice, as follows: Work to last 9 sts, dec3R, work to end—11 sts remain.

Work even until cap measures 11¼ (12, 13¼, 14½, 15¾, 16½, 17½)" [28.5 (30.5, 33.5, 37, 40, 42, 44.5) cm], ending with a WS row. Cut yarn, leaving a long tail, and place all sts on holder.

RIGHT SLEEVE

Work as for Left Sleeve to *Shape Front Edge*.

Shape Front Edge

Next Row (RS): Work 3 sts, dec3L, work to end—26 sts remain.

Work even until cap measures approximately 8¼ (8¾, 9¾, 10¾, 11¾, 12¼, 13)" [21 (22, 25, 27.5, 30, 31, 33) cm], ending with Row 4 of Texture Pattern.

Shape Neck Edge

Next Row (RS): BO 6 sts, work to end—20 sts rem.

Work even for 1 row.

Decrease 3 sts at neck edge on next RS row, then every 4 rows twice, as follows: Work 3 sts, dec3L, work to end—11 sts remain.

Work even until cap measures 11¼ (12, 13¼, 14½, 15¾, 16½, 17½)" [28.5 (30.5, 33.5, 37, 40, 42, 44.5) cm], ending with a WS row. Cut yarn, leaving a long tail, and place all sts on holder.

FINISHING

Block pieces as desired.

Sew raglan edge of each Sleeve to raglan edge of Back (making sure to sew Left Sleeve to left armhole and Right Sleeve to right armhole), then sew straight side edge of top of Sleeve to Back BO edge, adding or removing rows at top of Sleeve to meet at center Back and using 1 live st from top of Sleeve in seam; leave remaining sts on holders. Sew raglan edge of each Front to raglan edge of each Sleeve, then sew straight side edge of top of Front to Sleeve, adding or removing rows at top of Front to meet at center Back and using 1 live st from both Front and Sleeve in seam; leave remaining sts on holders. Transfer sts from Right Sleeve and Front holders to one needle and sts from Left Sleeve and Front holders to second needle; with WSs of pieces together (seam will be on RS), join sts using 3-Needle BO. Sew side and Sleeve seams.

